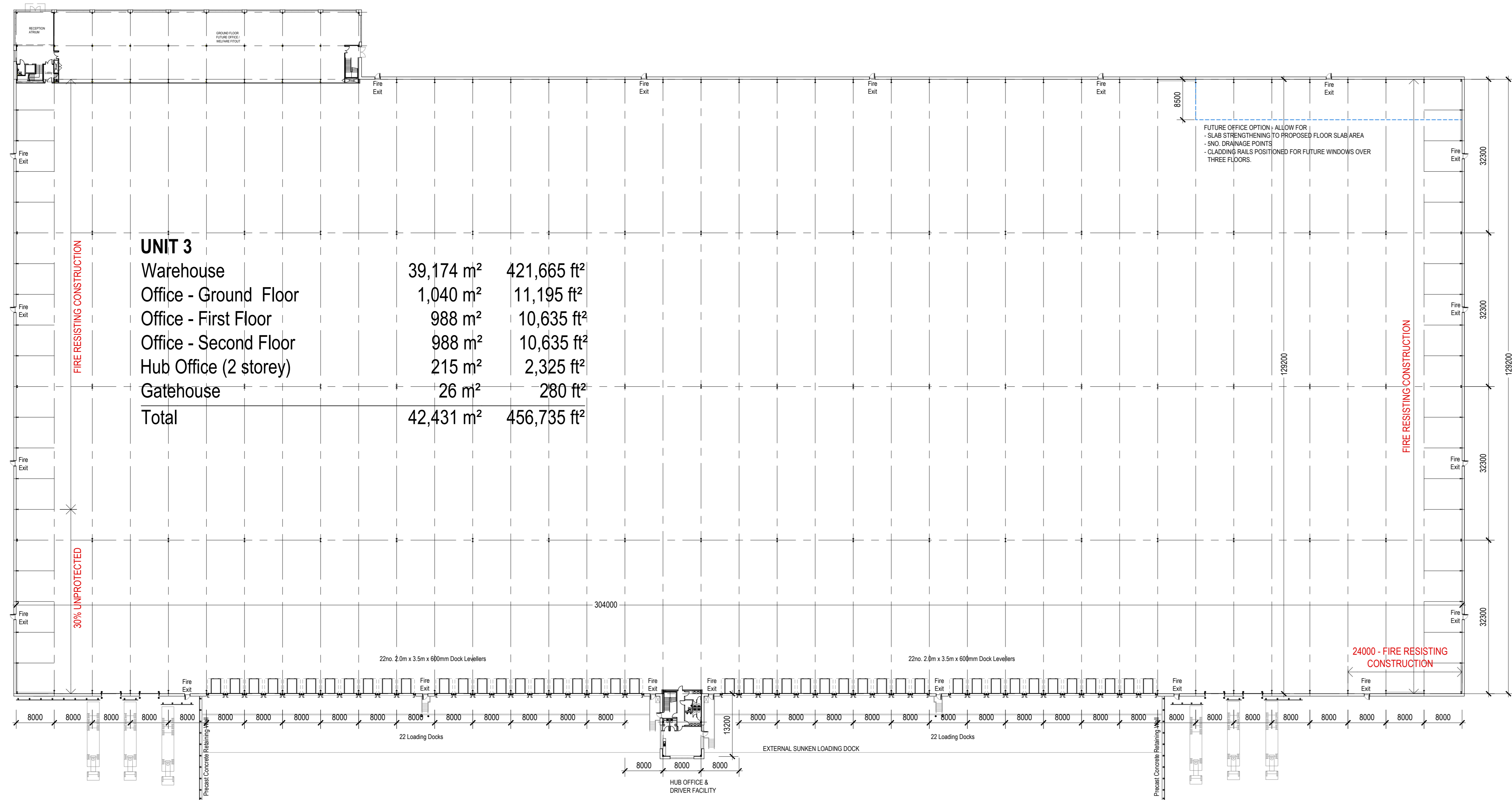


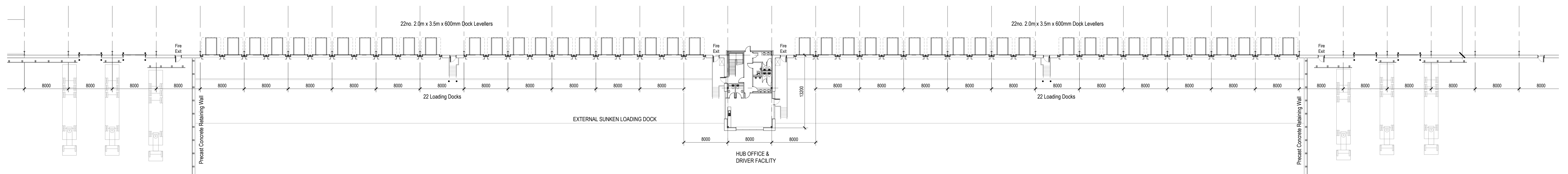
GROUND FLOOR OFFICE PLAN 1:250

UNIT 3

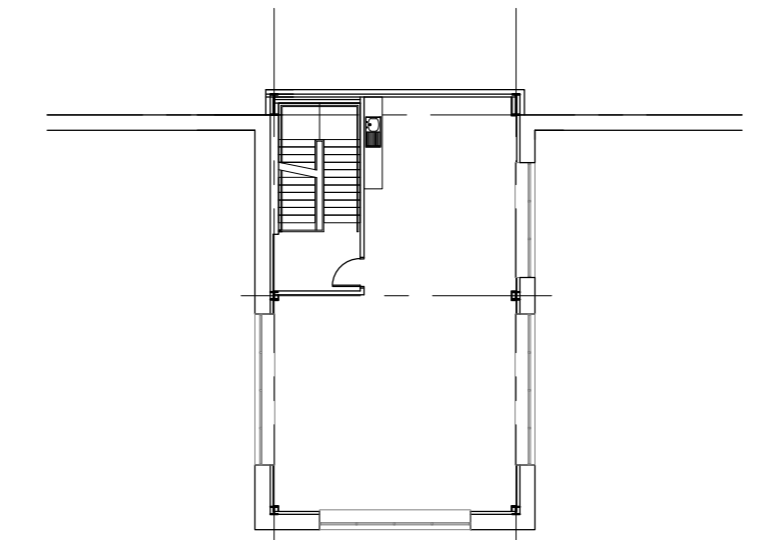
Warehouse	39,174 m ²	421,665 ft ²
Office - Ground Floor	1,040 m ²	11,195 ft ²
Office - First Floor	988 m ²	10,635 ft ²
Office - Second Floor	988 m ²	10,635 ft ²
Hub Office (2 storey)	215 m ²	2,325 ft ²
Gatehouse	26 m ²	280 ft ²
Total	42,431 m²	456,735 ft²



GROUND FLOOR PLAN 1:500

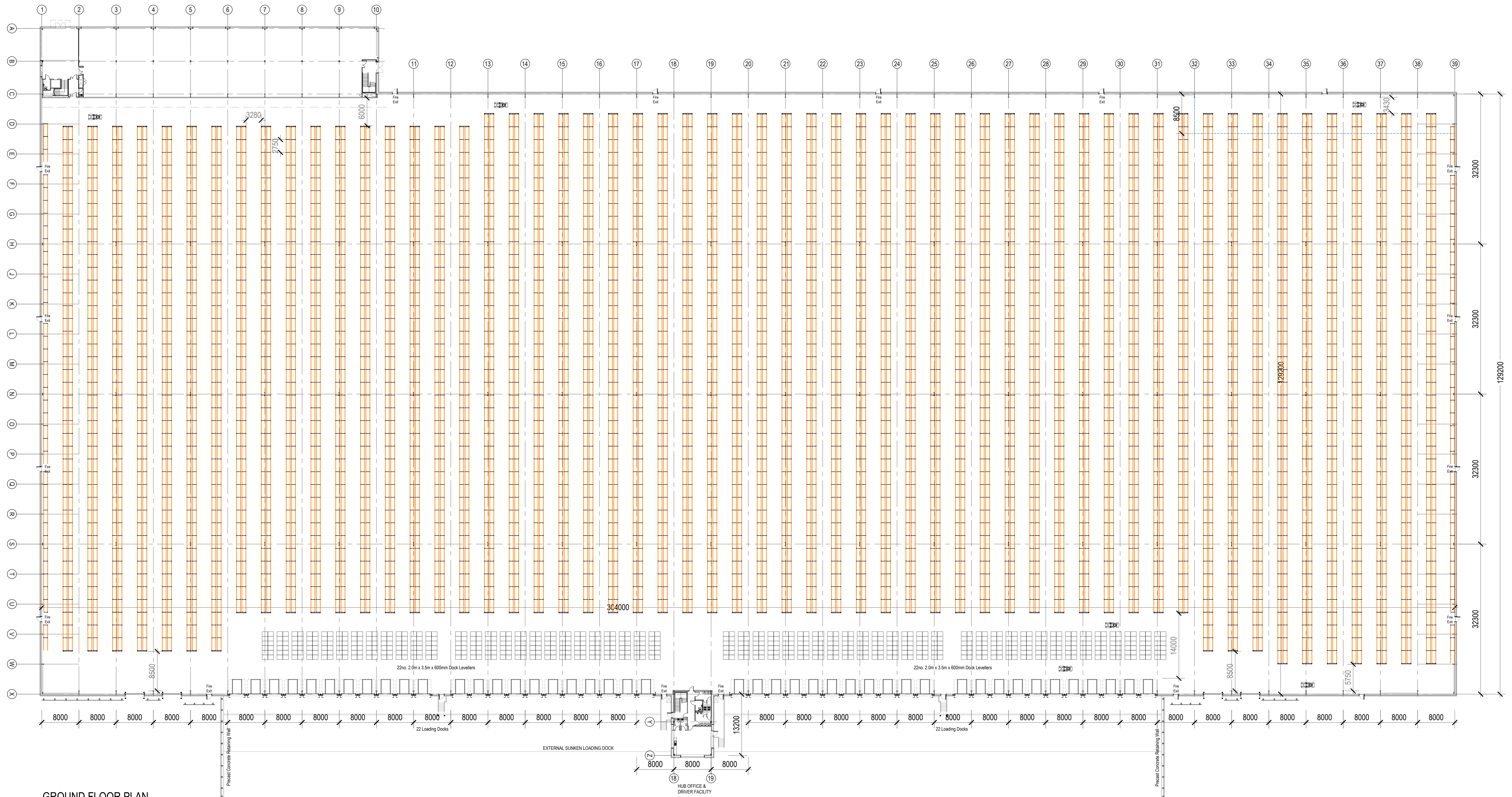


GROUND FLOOR PLAN AT LOADING DOCKS 1:250



HUB FIRST FLOOR

P01: Fire Resisting Construction
 P02: 30% UNPROTECTED
 P03: 24000 - FIRE RESISTING CONSTRUCTION
 P04: FUTURE OFFICE OPTION - ALLOW FOR:
 - SLAB STRENGTHENING TO PROPOSED FLOOR SLAB AREA
 - DRG DRAINAGE POINTS
 - CLADDING RAILS POSITIONED FOR FUTURE WINDOWS OVER THREE FLOORS
 P05: Fire Resisting Construction
 P06: Fire Resisting Construction
 P07: Fire Resisting Construction
 P08: Fire Resisting Construction
 P09: Fire Resisting Construction
 P10: Fire Resisting Construction
 P11: Fire Resisting Construction
 P12: Fire Resisting Construction
 P13: Fire Resisting Construction
 P14: Fire Resisting Construction
 P15: Fire Resisting Construction
 P16: Fire Resisting Construction
 P17: Fire Resisting Construction
 P18: Fire Resisting Construction
 P19: Fire Resisting Construction
 P20: Fire Resisting Construction
 P21: Fire Resisting Construction
 P22: Fire Resisting Construction
 P23: Fire Resisting Construction
 P24: Fire Resisting Construction
 P25: Fire Resisting Construction
 P26: Fire Resisting Construction
 P27: Fire Resisting Construction
 P28: Fire Resisting Construction
 P29: Fire Resisting Construction
 P30: Fire Resisting Construction
 P31: Fire Resisting Construction
 P32: Fire Resisting Construction
 P33: Fire Resisting Construction
 P34: Fire Resisting Construction
 P35: Fire Resisting Construction
 P36: Fire Resisting Construction
 P37: Fire Resisting Construction
 P38: Fire Resisting Construction
 P39: Fire Resisting Construction
 P40: Fire Resisting Construction
 P41: Fire Resisting Construction
 P42: Fire Resisting Construction
 P43: Fire Resisting Construction
 P44: Fire Resisting Construction
 P45: Fire Resisting Construction
 P46: Fire Resisting Construction
 P47: Fire Resisting Construction
 P48: Fire Resisting Construction
 P49: Fire Resisting Construction
 P50: Fire Resisting Construction
 P51: Fire Resisting Construction
 P52: Fire Resisting Construction
 P53: Fire Resisting Construction
 P54: Fire Resisting Construction
 P55: Fire Resisting Construction
 P56: Fire Resisting Construction
 P57: Fire Resisting Construction
 P58: Fire Resisting Construction
 P59: Fire Resisting Construction
 P60: Fire Resisting Construction
 P61: Fire Resisting Construction
 P62: Fire Resisting Construction
 P63: Fire Resisting Construction
 P64: Fire Resisting Construction
 P65: Fire Resisting Construction
 P66: Fire Resisting Construction
 P67: Fire Resisting Construction
 P68: Fire Resisting Construction
 P69: Fire Resisting Construction
 P70: Fire Resisting Construction
 P71: Fire Resisting Construction
 P72: Fire Resisting Construction
 P73: Fire Resisting Construction
 P74: Fire Resisting Construction
 P75: Fire Resisting Construction
 P76: Fire Resisting Construction
 P77: Fire Resisting Construction
 P78: Fire Resisting Construction
 P79: Fire Resisting Construction
 P80: Fire Resisting Construction
 P81: Fire Resisting Construction
 P82: Fire Resisting Construction
 P83: Fire Resisting Construction
 P84: Fire Resisting Construction
 P85: Fire Resisting Construction
 P86: Fire Resisting Construction
 P87: Fire Resisting Construction
 P88: Fire Resisting Construction
 P89: Fire Resisting Construction
 P90: Fire Resisting Construction
 P91: Fire Resisting Construction
 P92: Fire Resisting Construction
 P93: Fire Resisting Construction
 P94: Fire Resisting Construction
 P95: Fire Resisting Construction
 P96: Fire Resisting Construction
 P97: Fire Resisting Construction
 P98: Fire Resisting Construction
 P99: Fire Resisting Construction
 P100: Fire Resisting Construction



GROUND FLOOR PLAN

UNIT 3 GIA

Warehouse	39,174 m ²	421,665 ft ²
Office - Ground Floor	1,040 m ²	11,195 ft ²
Office - First Floor	988 m ²	10,635 ft ²
Office - Second Floor	988 m ²	10,635 ft ²
Hub Office (2 storey)	215 m ²	2,325 ft ²
Gatehouse	26 m ²	280 ft ²
Total	42,431 m²	456,735 ft²

GENERIC WIDE AISLE RACKING LAYOUT

- Haunch Height - 15m
- Pallet size 1200x1000x1500mm high.
- 2 pallets per bay - side (1200mm) facing.
- Pallet Stacking - 9 pallets high (pallets at column positions omitted. Reduced height pallets at valley beams (1.0m))
- First Layer Total - 8,988 pallets
- Total pallets - 80,892 pallets
- Dock Area shown for pallet stacking - single layer - 660 pallets

Note: Total will vary with access / tunnel corridors to suit Occupier & Fire Engineering Design / Fire Strategy

Revisions:		
PO1: First Issue	03.02.21 kl	03.02.21 kl
PO2: Pallets updated	03.02.21 kl	03.02.21 kl
PO3: Pallet numbers updated.	03.02.21 kl	03.02.21 kl
PO4: Line area updated.	20.07.22 kl	20.07.22 kl



The Old Rectory Rectory Lane Milton Mabor
 NORTHAMPTON NN7 3AQ
 t: +44 (0)1604 859816 f: +44 (0)1604 859123
 www.peter-hadson.com

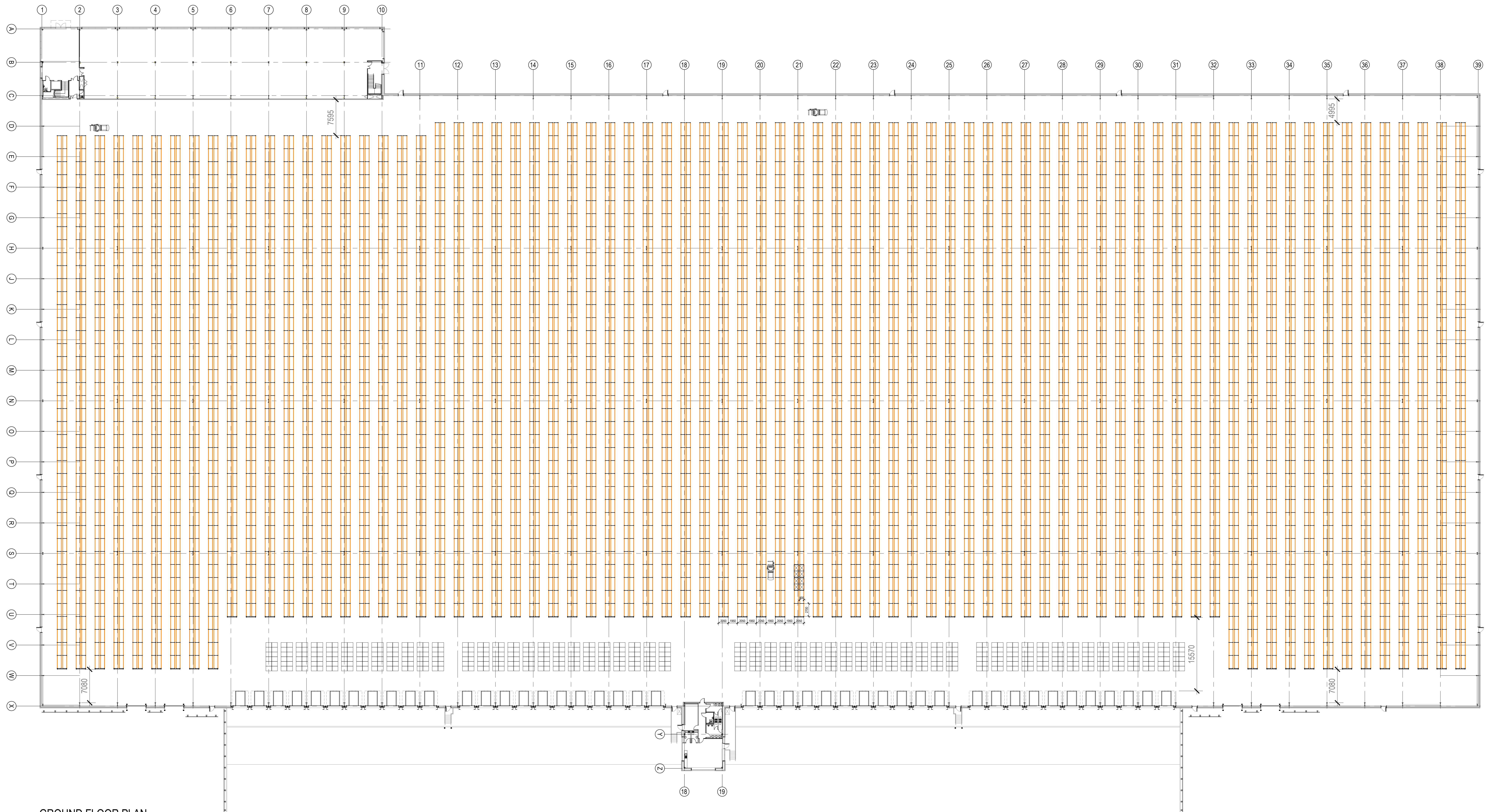
Project Number: 3785
**Basford West - Plot 3
 Crew**

PLP
 GA PLANS - GENERIC WIDE AISLE RACKING

Status: Preliminary
 Drawn by: KI Checked by: RM
 Date: JULY 2021

Document Number:
 G1113 - PHP-01-00-DR-A - 600 - P04
 Scale: A0 NTS

Copyright reserved. Dimensions to be checked on site.
 Discrepancies to be reported before proceeding.



GROUND FLOOR PLAN

UNIT 3 GIA

Warehouse	39,174 m ²	421,665 ft ²
Office - Ground Floor	1,040 m ²	11,195 ft ²
Office - First Floor	988 m ²	10,635 ft ²
Office - Second Floor	988 m ²	10,635 ft ²
Hub Office (2 storey)	215 m ²	2,325 ft ²
Gatehouse	26 m ²	280 ft ²
Total	42,431 m²	456,735 ft²

GENERIC VNA RACKING LAYOUT

- Haunch Height - 15m
- Pallet size 1200x1000x1500mm high.
- 2 pallets per bay - side (1200mm) facing.
- Pallet Stacking - 9 pallets high (pallets at column positions omitted. Reduced height pallets at valley beams (1.0m))
- First Layer Total - 11,672 pallets
- Total pallets - 105,048 pallets
- Dock Area shown for pallet stacking - single layer - 660 pallets

Note: Total will vary with access / tunnel corridors to suit Occupier & Fire Engineering Design / Fire Strategy

Revisions:
P01: Construction Issue. 20/01/22 kj



The Old Rectory Rectory Lane Milton Keynes
 NORTHAMPTON NN7 3AQ
 t: +44 (0)1604 859116 f: +44 (0)1604 859123
 www.peter-hadron.com

Project Number: 3785
Basford West - Plot 3
Crewe

PLP
 GA FLOOR PLANS - GENERIC VNA RACKING
 Status: Preliminary
 Drawn by: KI Checked by: RM
 Date: JULY 2021
 Document Number:
 G1113 - PHP-01-00-DR-A - 601 - P01
 Scale: A0 NTS

Copyright reserved. Dimensions to be checked on site.
 Discrepancies to be reported before proceeding.