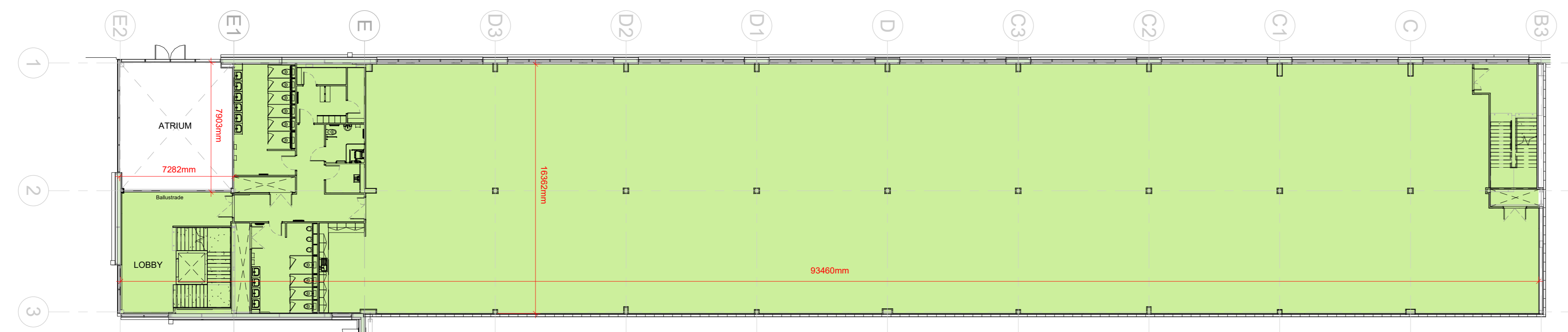
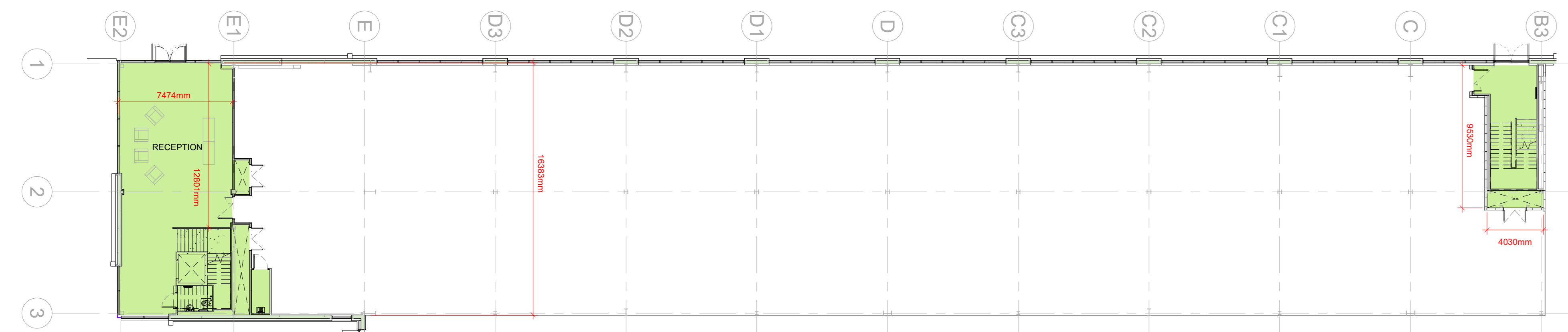




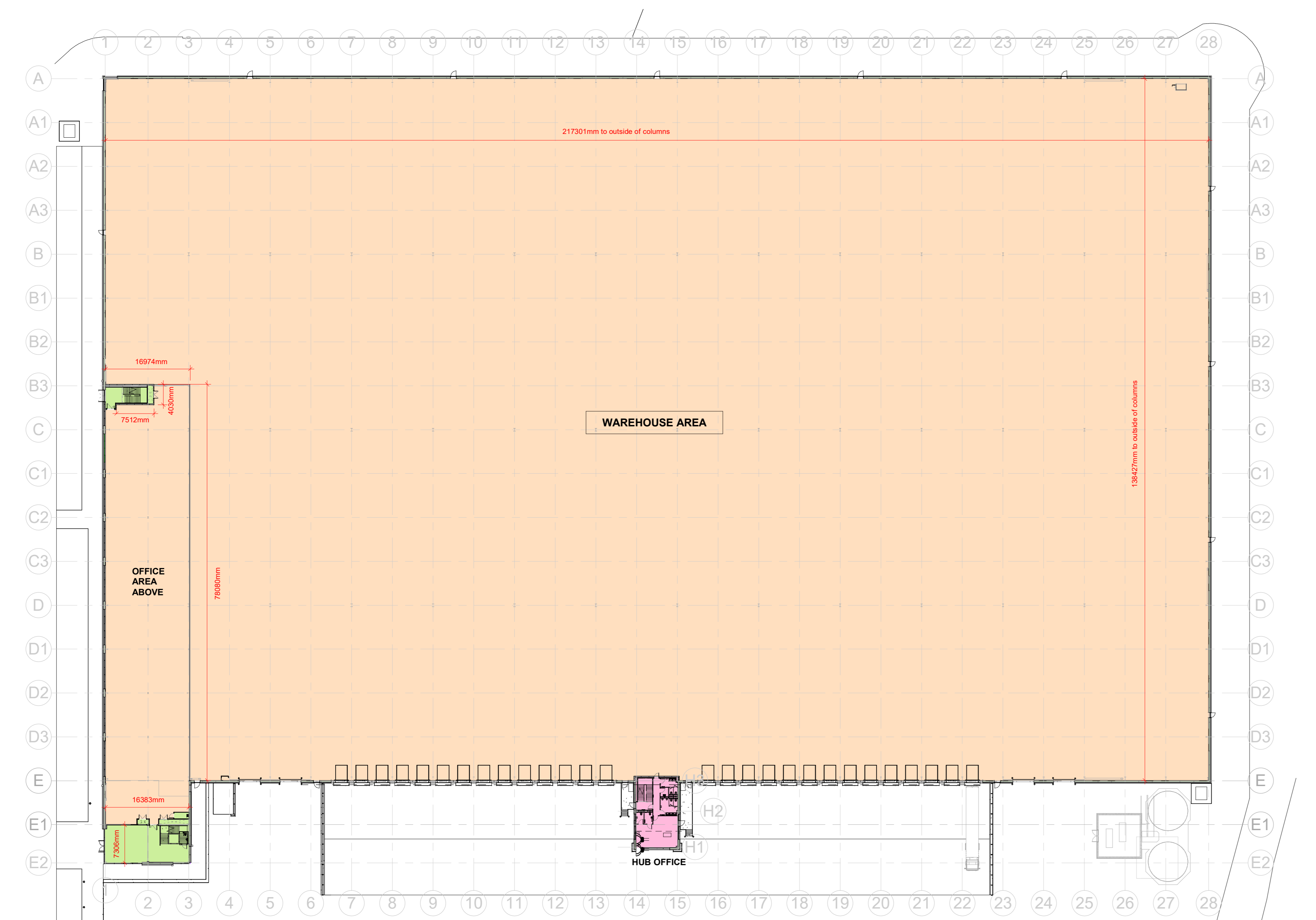
SECOND FLOOR OFFICE PLAN - SCALE 1:200



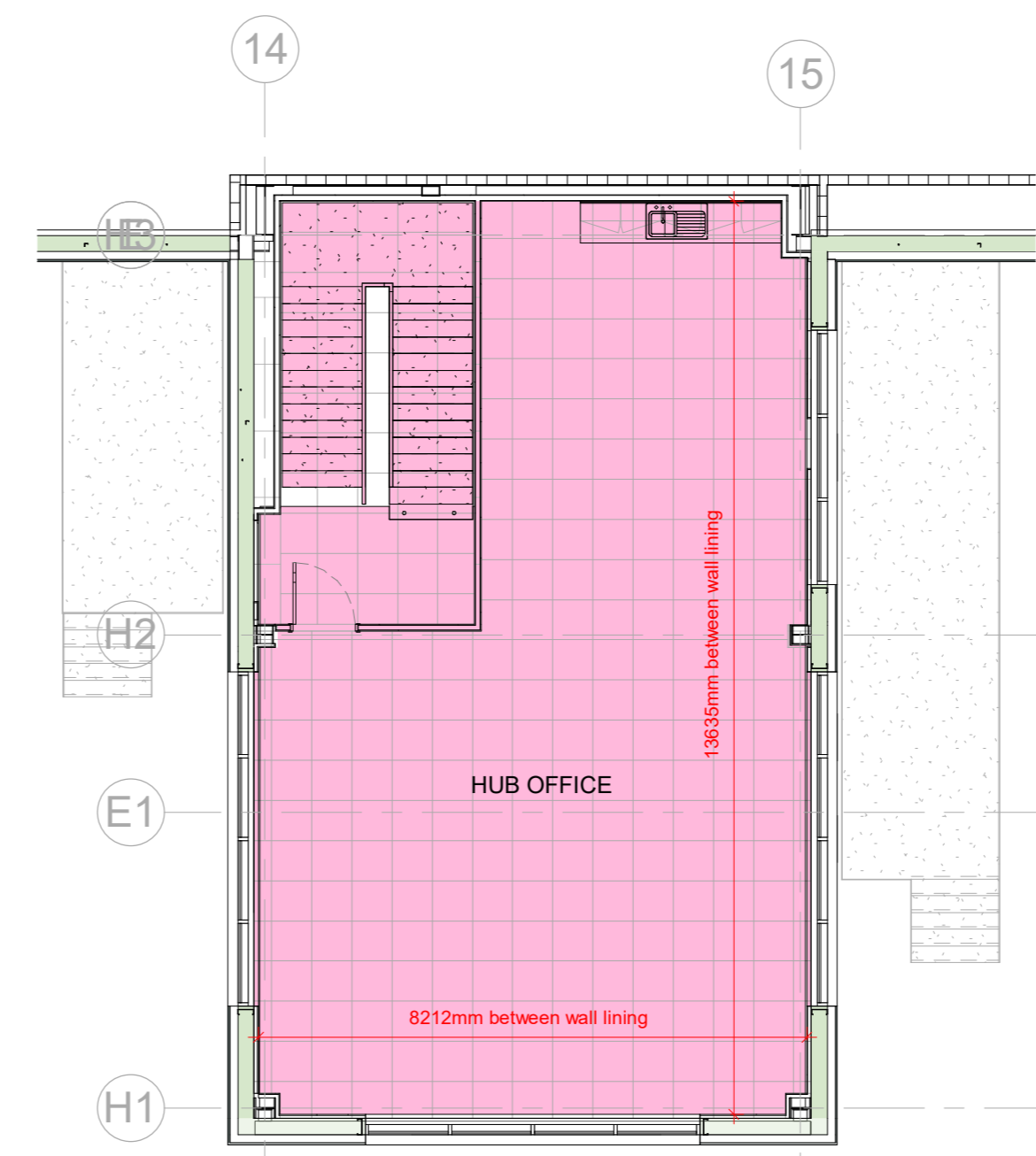
FIRST FLOOR OFFICE PLAN - SCALE 1:200



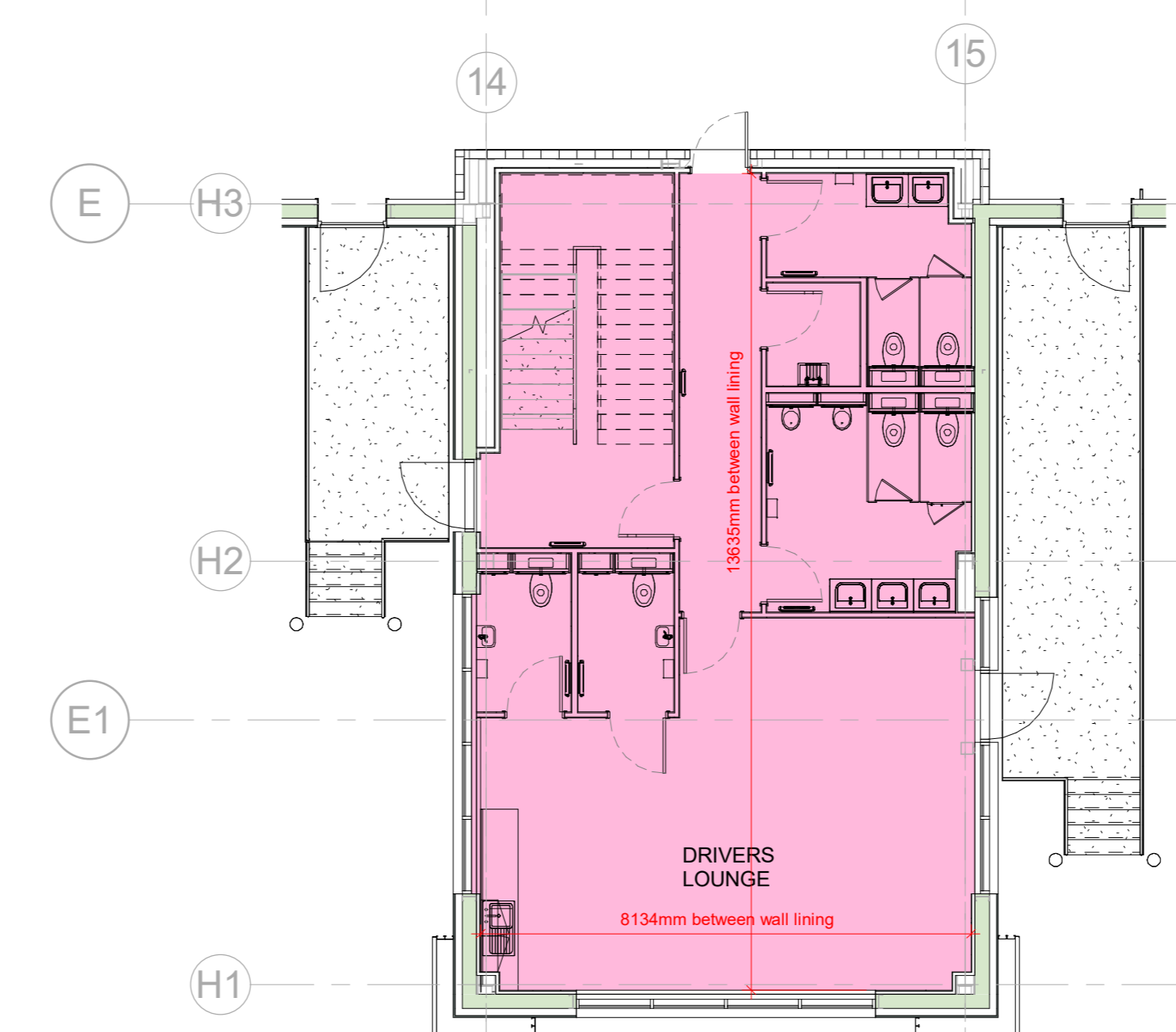
GROUND FLOOR OFFICE PLAN - SCALE 1:200



GROUND FLOOR PLAN - SCALE 1:500

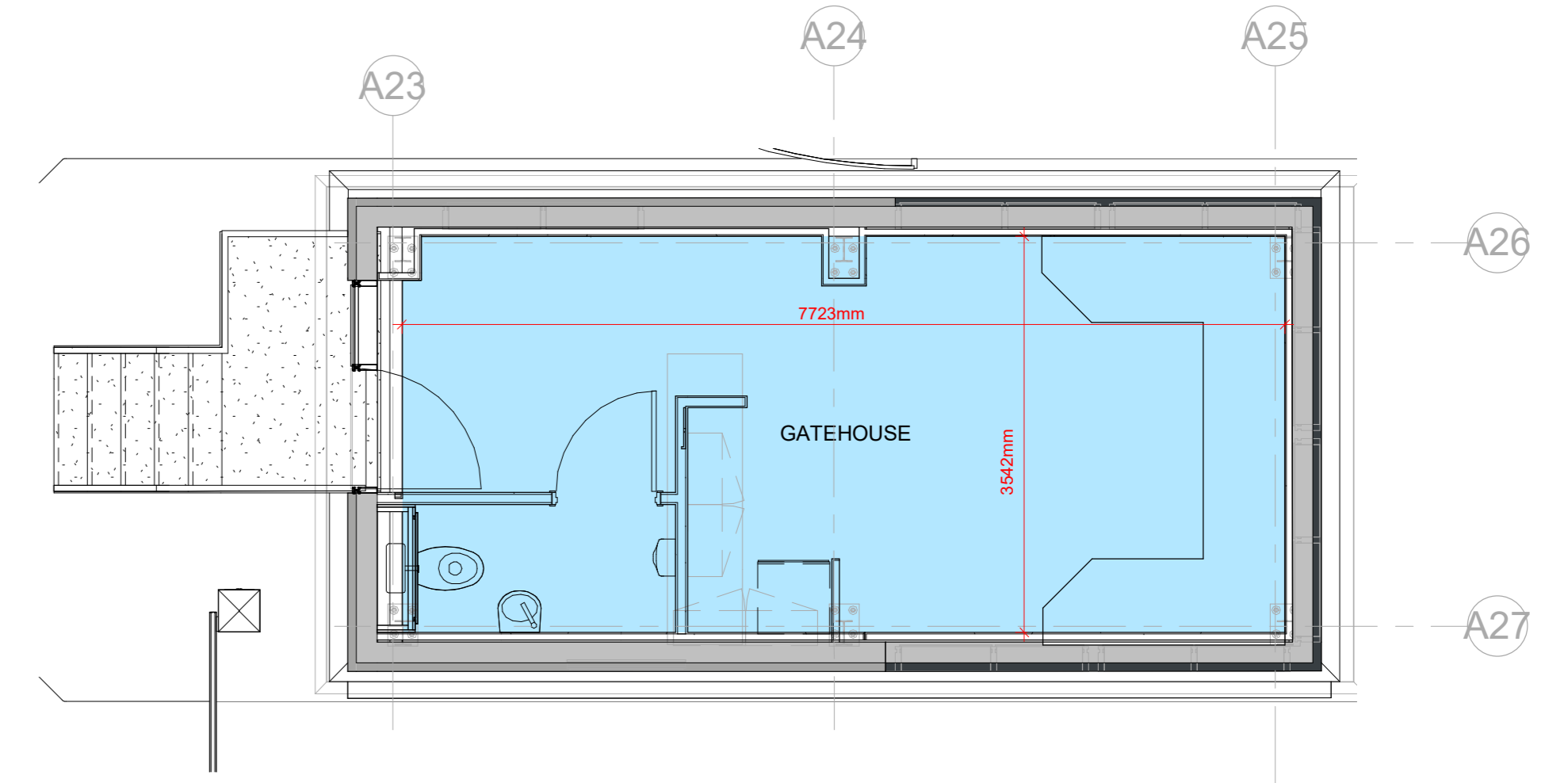


FIRST FLOOR HUB OFFICE PLAN  
SCALE 1: 100

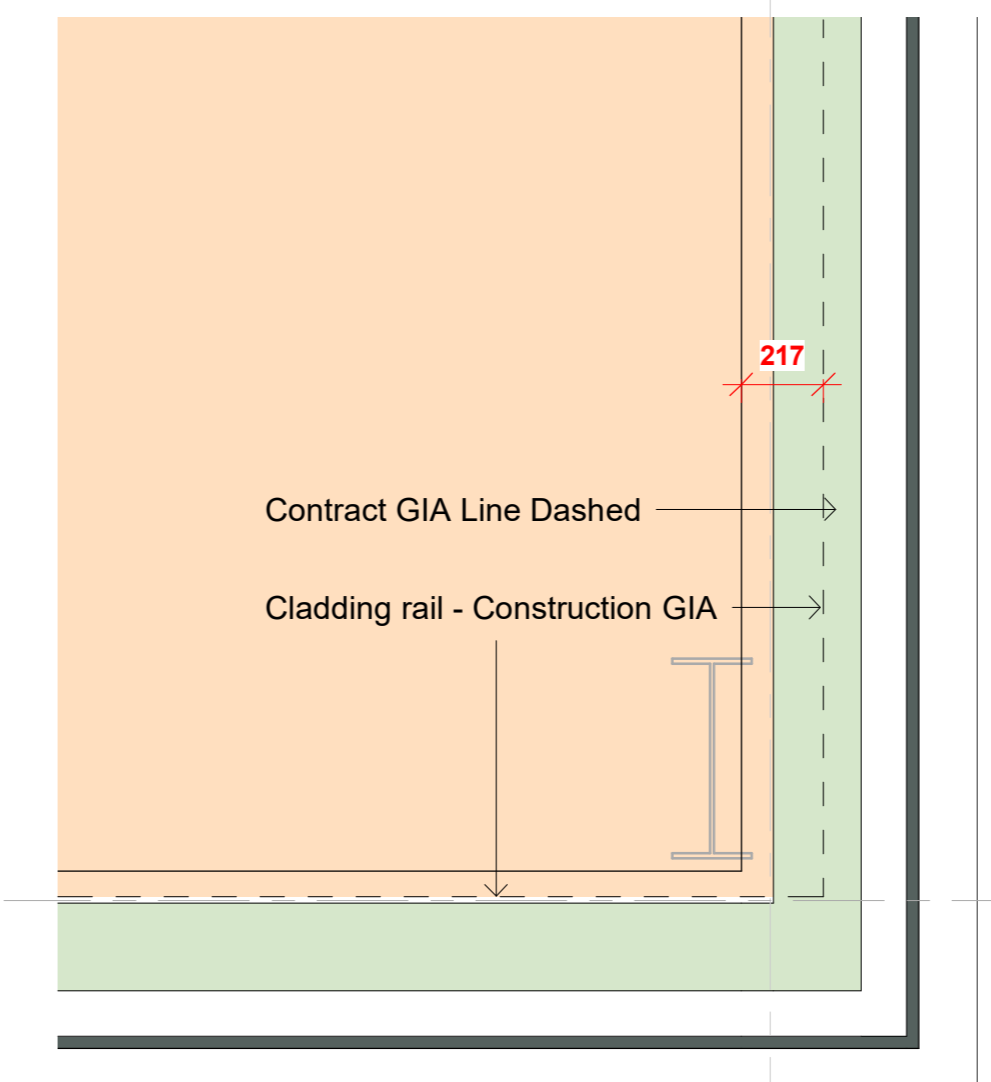


GROUND FLOOR HUB OFFICE PLAN  
SCALE 1: 100

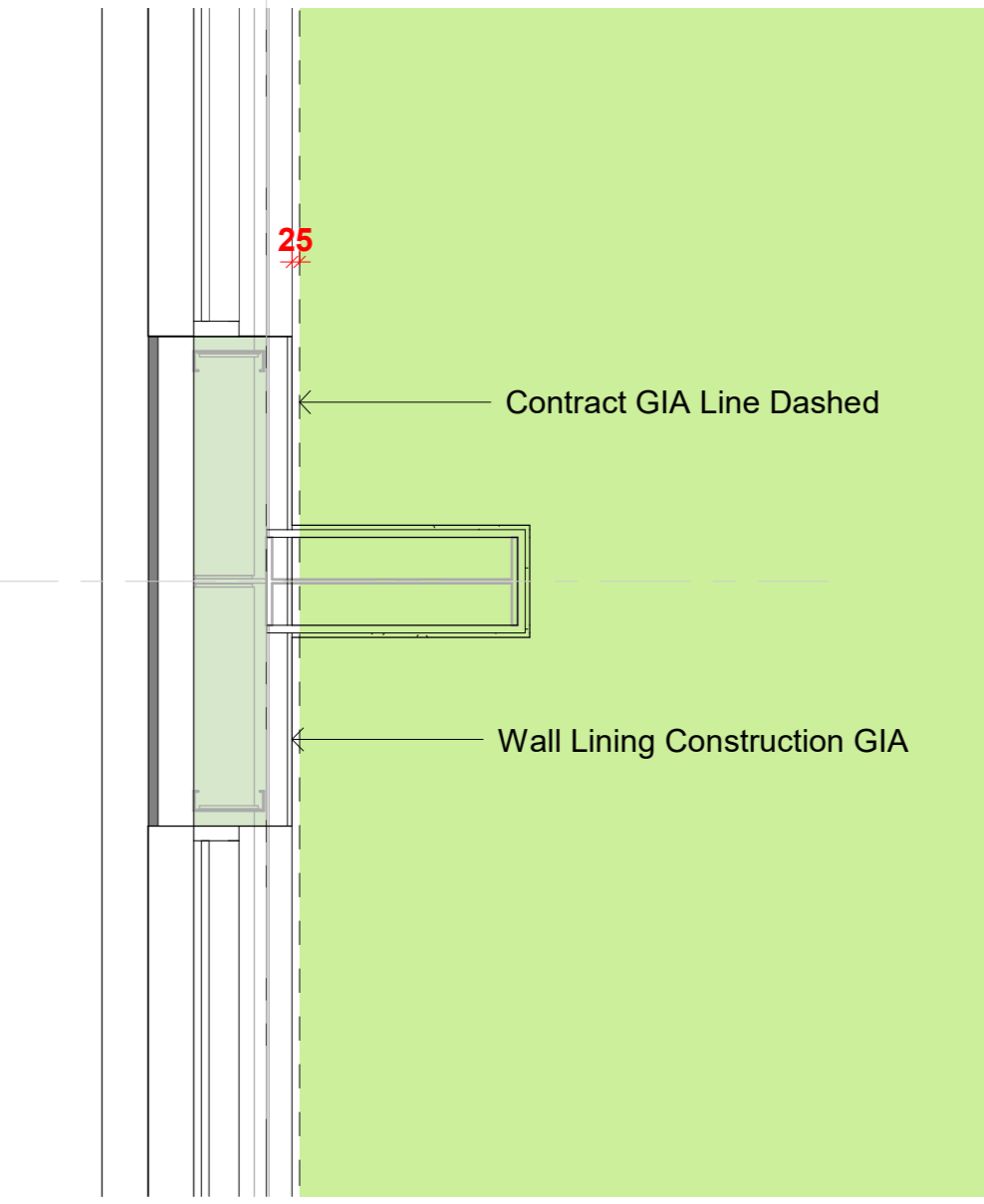
MEASURED AREAS - GIA	
WAREHOUSE UNIT -	30,015sqm / 323,082sqft
OFFICE GROUND FLOOR -	178sqm / 1,917sqft
OFFICE FIRST FLOOR -	1,463sqm / 15,754sqft
OFFICE SECOND FLOOR -	148sqm / 1,596sqft
HUB OFFICE -	222sqm / 2,391sqft
GATEHOUSE -	27sqm / 296sqft
<b>TOTAL -</b>	<b>32,055sqm / 345,039 sqft</b>



GROUND FLOOR GATE HOUSE PLAN  
SCALE 1: 50



WAREHOUSE AREA - SCALE 1:20



OFFICE AREA - SCALE 1:25

CONTRACT AREAS IS SET 25mm INBOUND FROM CLADDING RAIL AND WALL LINING POSITIONS TO PROVIDE TOLERANCE.

CONSTRUCTION AREA IS ACTUAL CLADDING RAIL AND WALL LINING POSITION.

C15: Updated with Measured Areas GIA.	25.10.23 DM
C14: Added GIA dimensions, after check dimensions taken on site.	24.10.23 DM
C13: Renamed overall dimensions.	16.10.23 DM
C12: Updated GIA measured areas to surveyed area.	13.10.23 DM
C11: Final Issue Status, including any updates to the construction issue and any amendments advised by the main contractor. Added in construction areas and critical dimensions.	16.09.23 DM
D10: Note amended.	06.02.23 DM
C09: General updates and amendments.	03.02.23 DM
C08: Additional updates.	02.02.23 DM
C07: General updates.	01.02.23 DM
C06: General updates.	01.02.23 DM
C05: Additional updates.	24.01.23 DM
C04: General update.	23.01.23 DM
C03: Corrected the contract GIA areas.	20.01.23 DM
C02: Updated drawing and added in GIA dimensions and plant block areas.	20.01.23 DM
C01: Construction issue.	19.01.23 DM

Rev.	Description	Date	Checked
1	The Old Rectory Rectory Lane Milton Malton N.Y.S. 14.01.21	14.01.21	PLP
2	t: +44 (0)1404 859916 f: +44 (0)1604 859123 www.peter-haddon.com		pHp architects

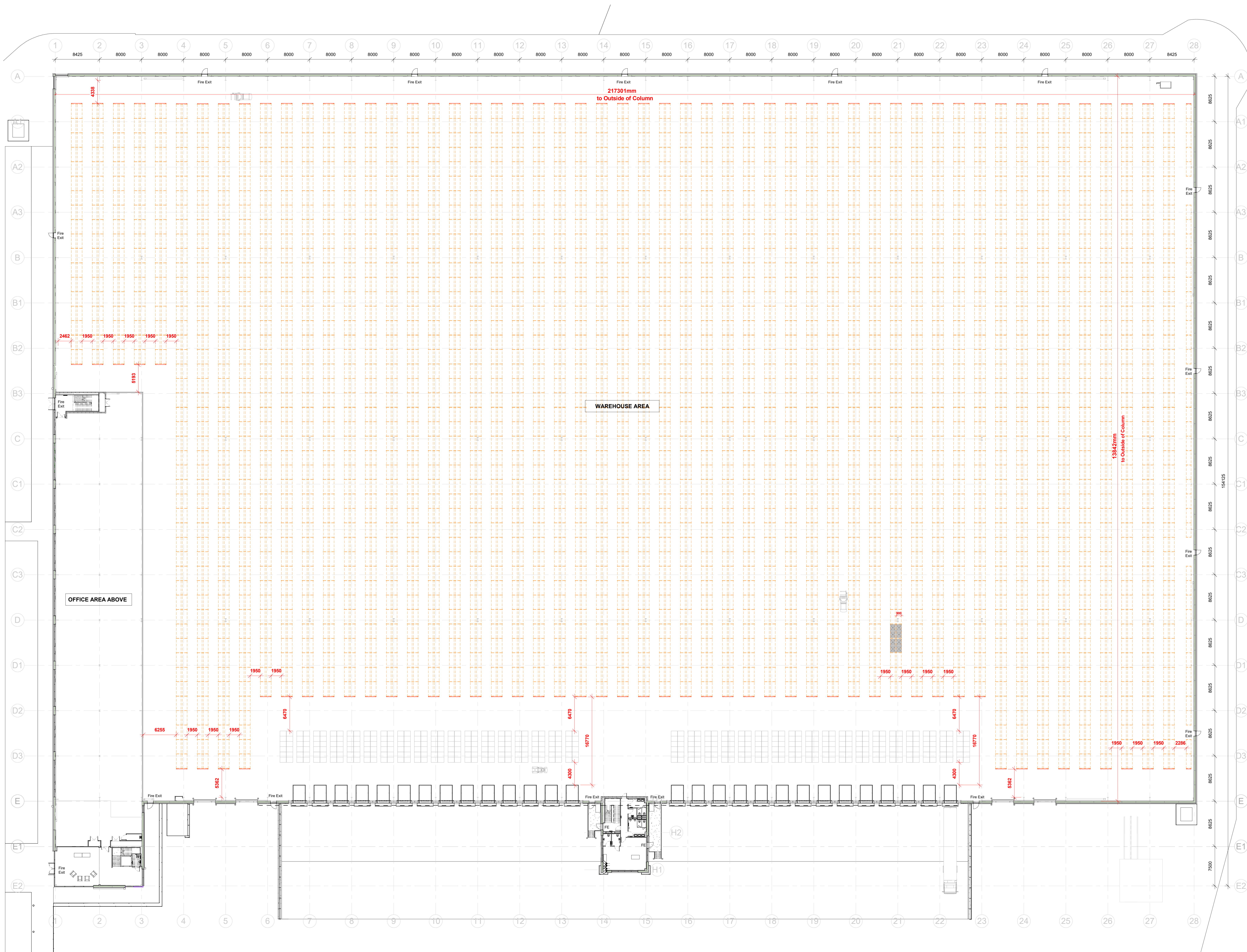
PLP Stone Business Park Staffordshire

Contract & Construction Area Plan

Status: FINAL ISSUE  
Drawn: DM Checked: KI  
Date: JANUARY 2023

Project Number: 4540  
G1141- pHp-ZZ- ZZ- DR-A- 00950- C15  
Scale@ A0 As indicated

Copyright reserved. Dimensions to be checked on site. Discrepancies to be reported before proceeding.



**MEASURED AREAS - GIA**

Warehouse Unit -	30,015sqm	323,082sqft
Office Ground Floor -	178sqm	1,917sqft
Office First Floor -	1,463sqm	15,754sqft
Office Second Floor -	148sqm	1,596sqft
Hub Office - (2 Storey)	222sqm	2,391sqft
Gatehouse -	27sqm	296sqft
<b>TOTAL -</b>	<b>32,055sqm</b>	<b>345,039 sqft</b>

**GENERIC VNA RACKING LAYOUT**

Haunch Height - 18m  
 Pallet Size 1200 x 1000 x 1500mm high  
 2 Pallets per bay - Side (1200mm) facing  
 Pallet Stacking - 10 Pallets high  
 (Pallets at column positions omitted)  
 Reduced height pallets at valley beams (1.0m)  
 First Layer Total - 8,572 Pallets

**Total Pallets - 85,720 Pallets**  
**Dock Area shown for pallet stacking : Single Layer 432 Pallets**

**NOTE: Total will vary with access/tunnel corridors to suit Occupier & Fire Engineer Design / Fire Strategy**

**GF Floor Plan - Generic VNA**  
 1 : 250

CO1:	Updated areas with Measured Areas GIA.	25.10.23 DM
CO2:	Updated overall warehouse dimensions, to constructed dimensions.	24.10.23 DM
CO3:	Final Issue Status, including any updates to the construction issue and any amendments linked to the main contractor.	16.08.23 DM
CO4:	Additional racking added and aisle widths amended.	07.02.23 DM
CO5:	Initial racking setting out layout.	05.02.23 DM

Rev.	Description	Date/Checked
1	The Old Rectory - Rectory Lane - Milton Abbas - N.E.T. & A.R.P. (D.N.)	N.B.T. J.A.Q.
2	t: +44 (0)1604 859916 f: +44 (0)1604 859123	
3	www.peter-haddon.com	

PLP Stone Business Park  
 Staffordshire

**Glencar CONSTRUCTION**

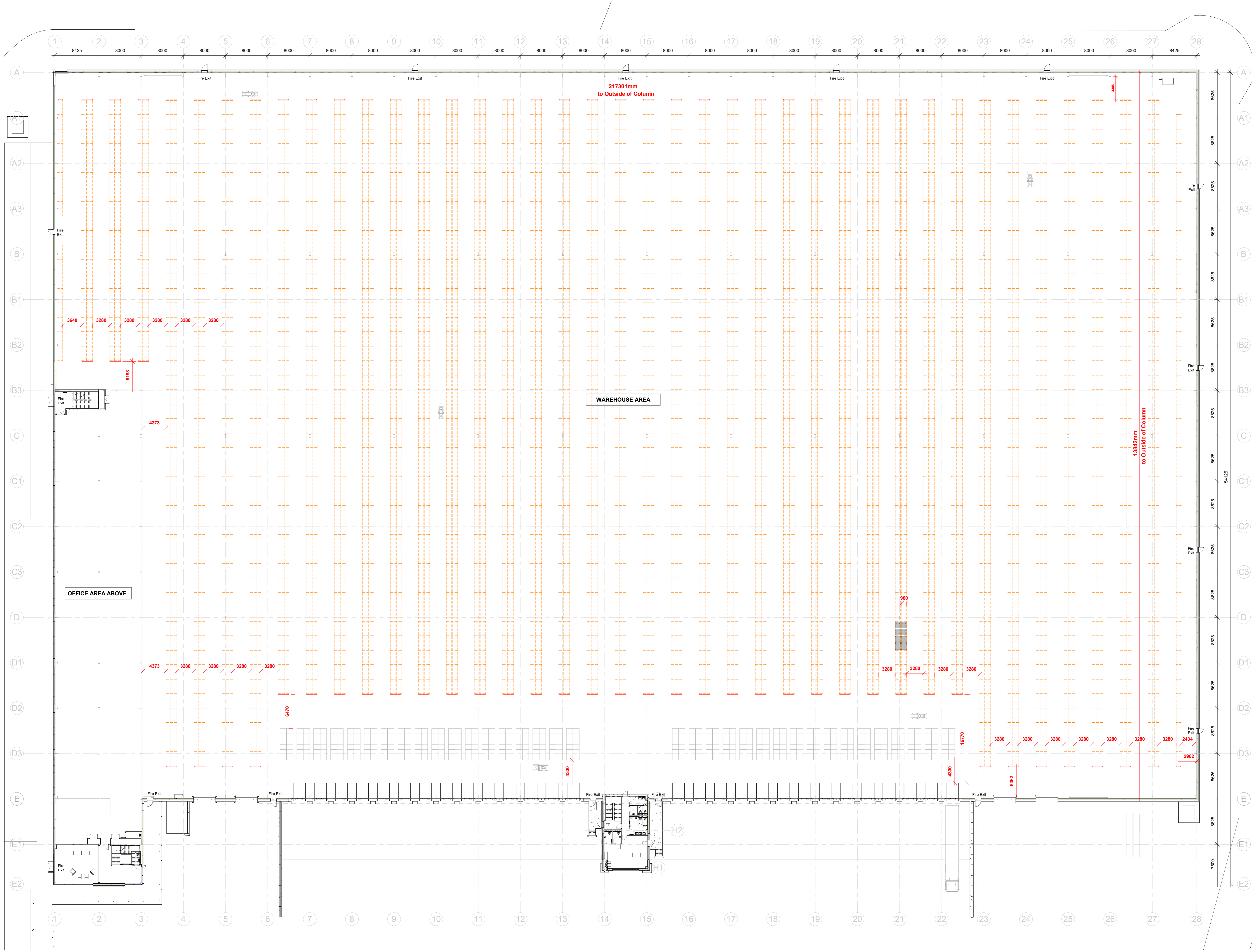
GA Floor Plan - Generic VNA Racking

Status	FINAL ISSUE
Drawn	DM Checked KI
Date	JANUARY 2023

Project Number: 4540

Project Code	Originator	Zone	Level/No.	Type	File	Dep. No.	Revision
G1141- PHPZZ- 00- DR- A-	00955-	C05					

Scale @ A0 1:250 As indicated  
 SCALE 1:250  
 Copyright reserved. Dimensions to be checked on site. Discrepancies to be reported before proceeding.



**MEASURED AREAS - GIA**

Warehouse Unit -	30,015sqm	323,082sqft
Office Ground Floor -	1,783sqm	1,917sqft
Office First Floor -	1,463sqm	15,754sqft
Office Second Floor -	148sqm	1,596sqft
Hub Office - (2 Storey)	222sqm	2,391sqft
Gatehouse -	27sqm	296sqft
<b>TOTAL -</b>	<b>32,055sqm</b>	<b>345,039 sqft</b>

**GENERIC WIDE RACKING LAYOUT**

Haunch Height - 18m  
 Pallet Size 1200 x 1000 x 1500mm high  
 2 Pallets per bay - Side (1200mm) facing

Pallet Stacking - 10 Pallets high  
 (Pallets at column positions omitted)  
 Reduced height pallets at valley beams (1.0m)  
 First Layer Total - 6,680 Pallets

**Total Pallets - 66,800 Pallets**  
**Dock Area shown for pallet stacking: Single Layer 420 Pallets**

**NOTE: Total will vary with access/tunnel corridors to suit Occupier & Fire Engineer Design / Fire Strategy**

**GF Floor Plan - Generic Wide Aisle**  
 1 : 250

C05: Updated areas with Measured Areas GIA. 25.10.23 DM  
 C04: Updated overall warehouse dimensions, to be constructed. 24.10.23 DM  
 C03: Final Issue Status, including any updates to the construction issue and any amendments added to the main contractor. 16.08.23 DM  
 C02: Additional racking added and aisle widths amended. 07.02.23 DM  
 C01: Initial racking setting out layout. 05.02.23 DM

Rev: The Old Rectory Rectory Lane Milton Abbot  
 NORTHWALL PT Q31 N 17.3 A Q  
 t: +44 (0)1404 859916 f: +44 (0)1604 859123  
 www.peter-haddon.com

**PLP**  
**Stone Business Park**  
 Staffordshire

**Glencar**  
 CONSTRUCTION

**GA Floor Plan - Generic Wide Aisle Racking**  
 Status: **FINAL ISSUE**  
 Drawn: DM Checked: KI  
 Date: JANUARY 2023

Project Number: 4540  
 Project Code: Originator: Zone: Level: No. Type: Size: Dwg No. Revision:  
**G1141- PHPZZ- 00- DR- A- 00956- C05**  
 Scale: A0 1 : 250  
 SCALE: 1:250  
 Copyright reserved. Dimensions to be checked on site. Discrepancies to be reported before proceeding.