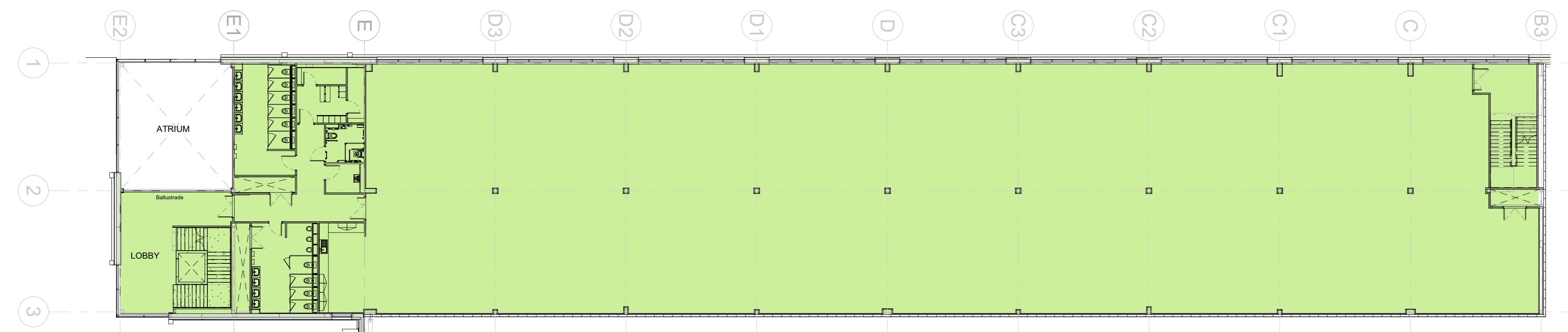
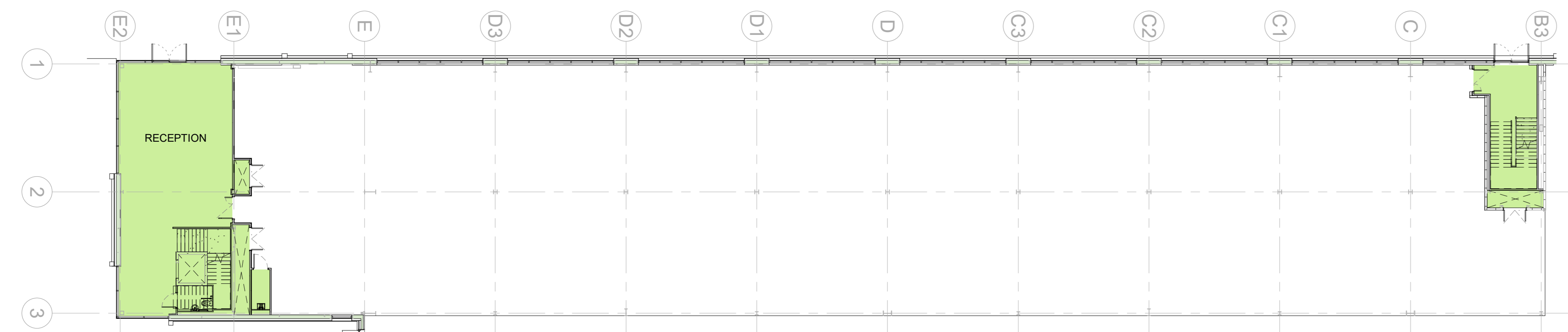


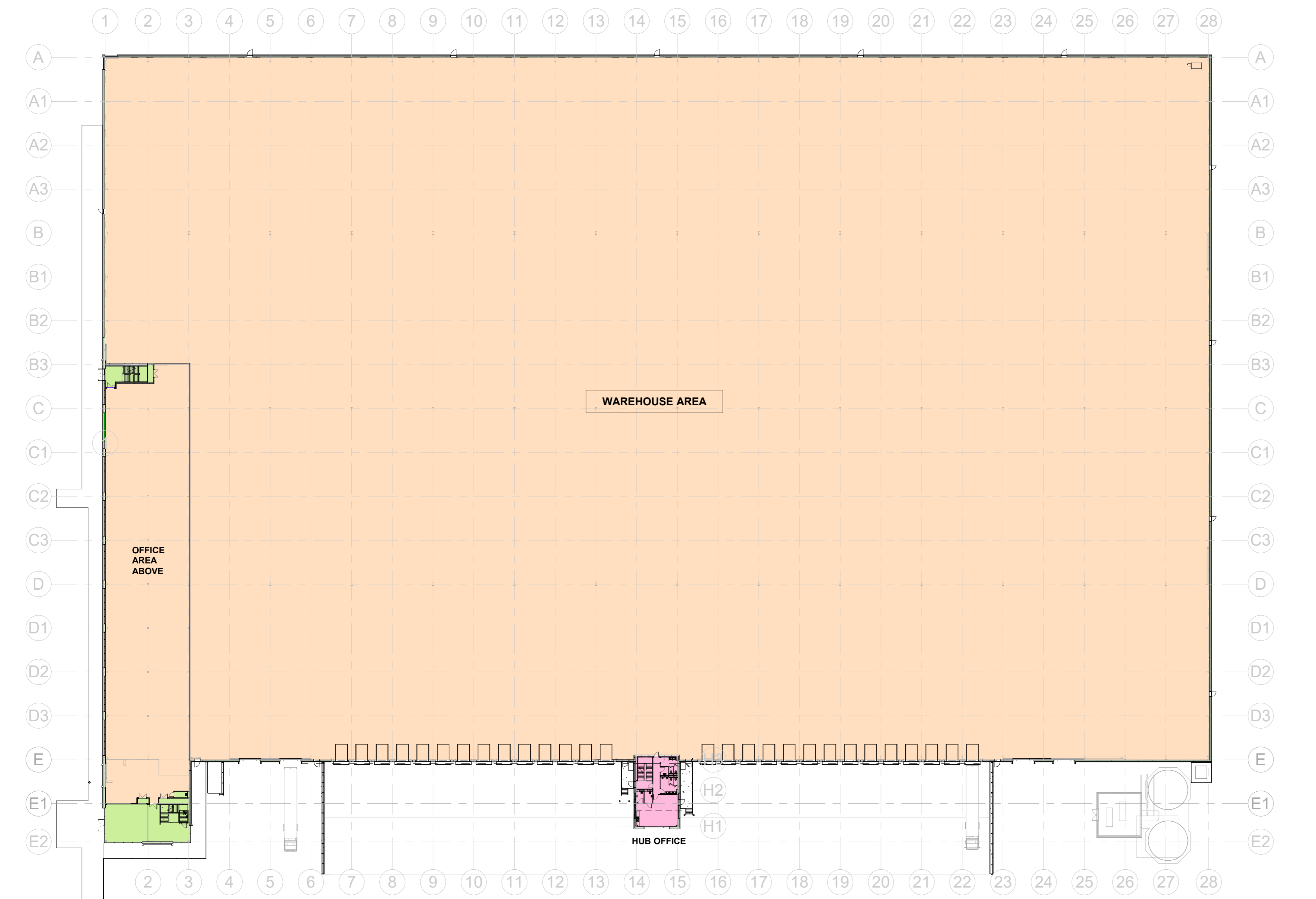
SECOND FLOOR OFFICE PLAN - SCALE 1:200



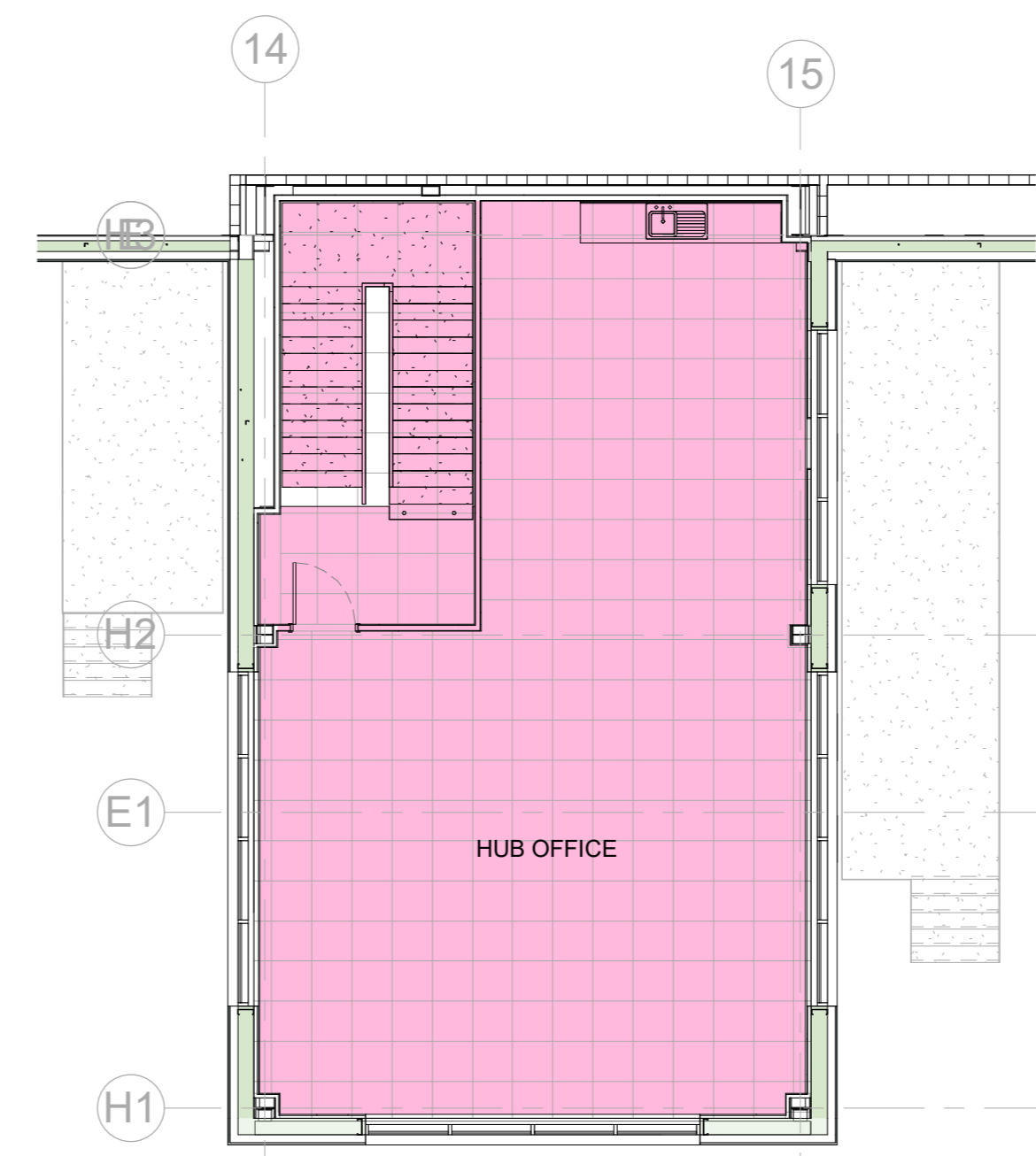
FIRST FLOOR OFFICE PLAN - SCALE 1:200



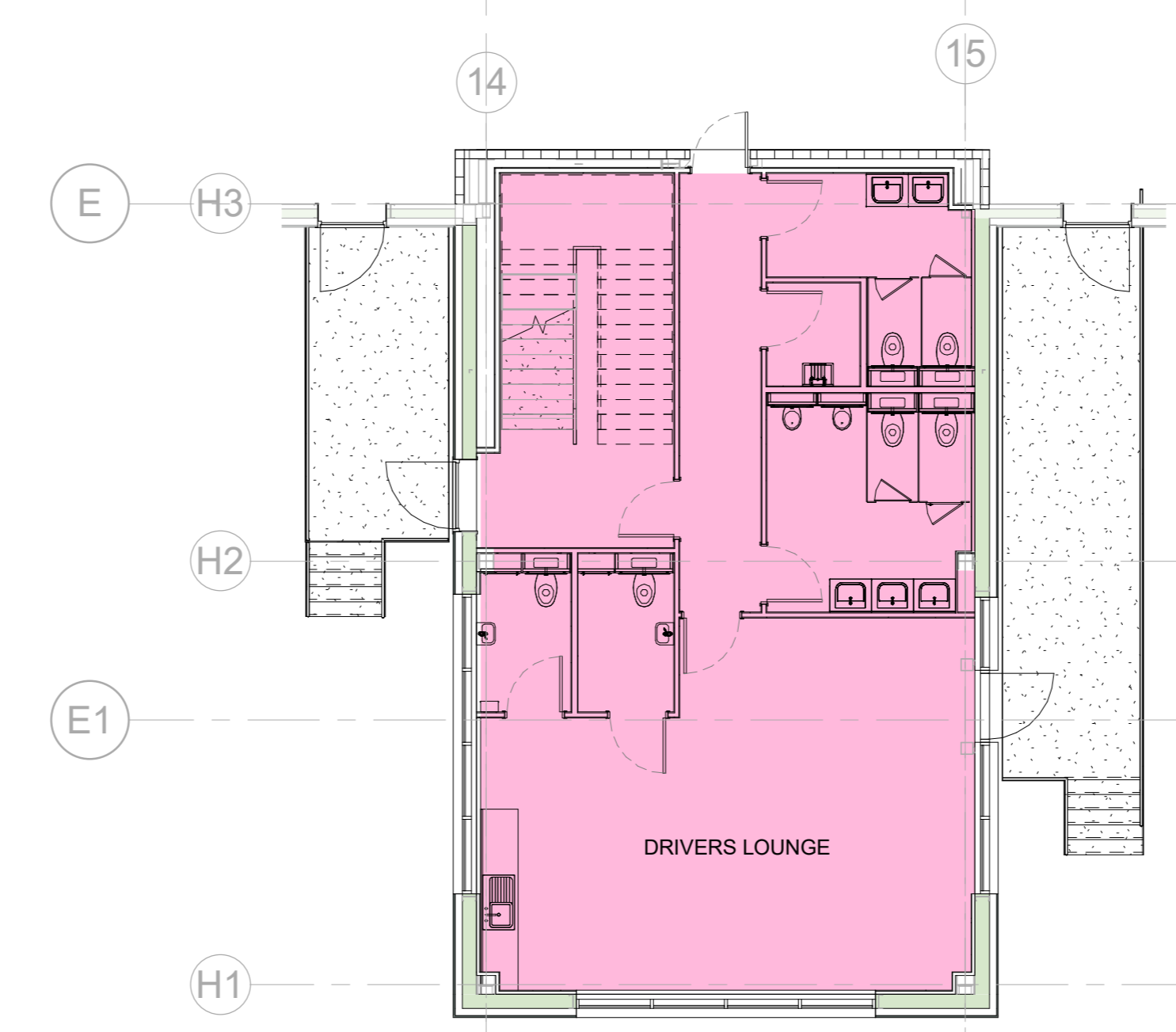
GROUND FLOOR OFFICE PLAN - SCALE 1:200



GROUND FLOOR PLAN - SCALE 1:500

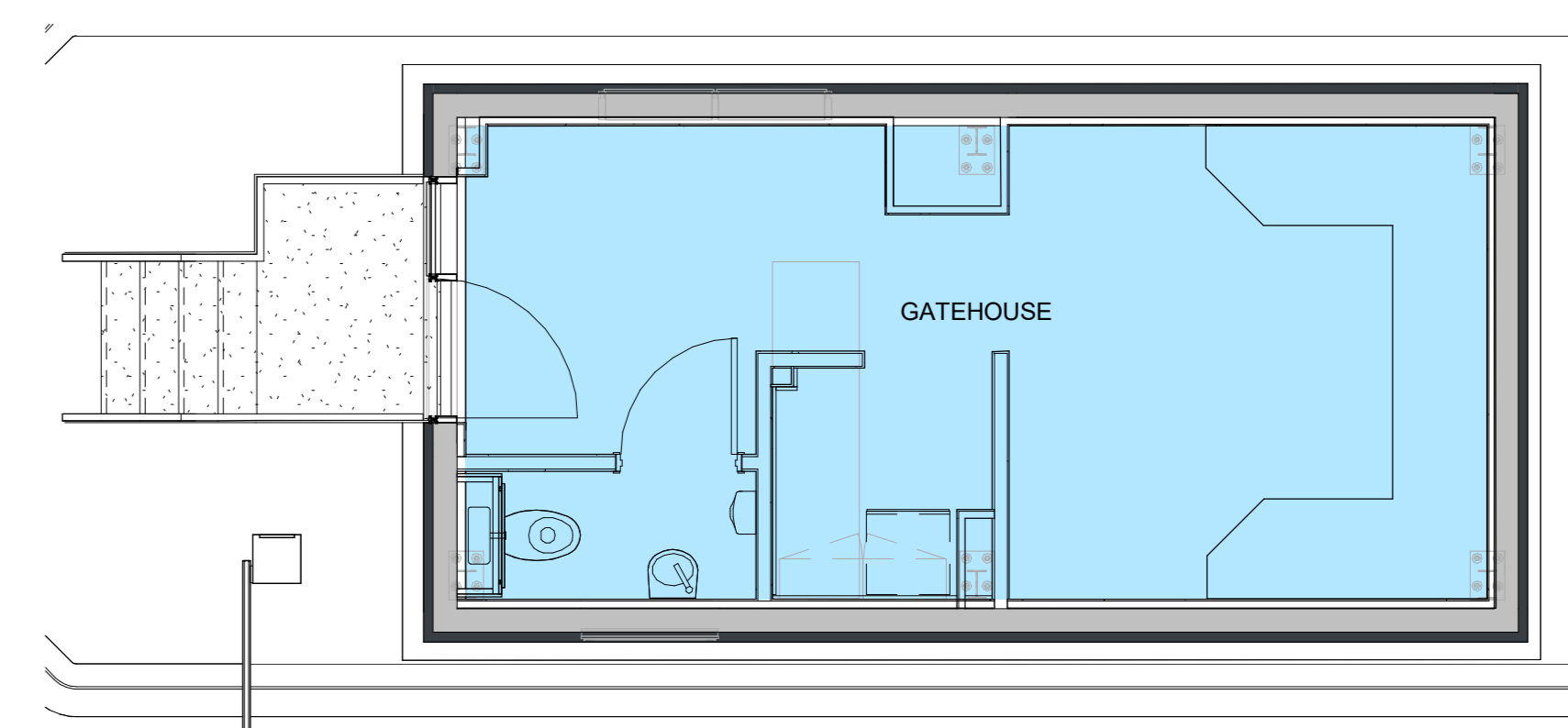


FIRST FLOOR HUB OFFICE PLAN
SCALE 1: 100

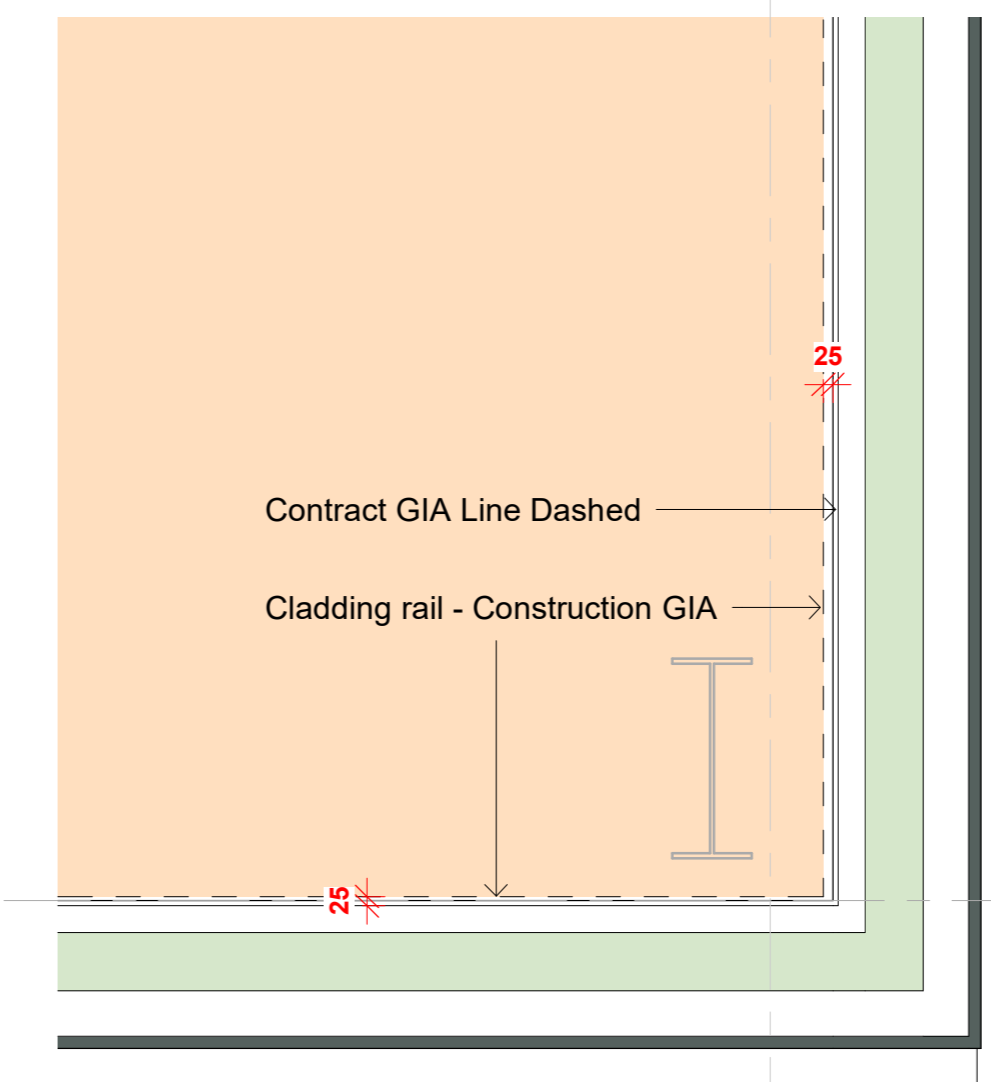


GROUND FLOOR HUB OFFICE PLAN
SCALE 1: 100

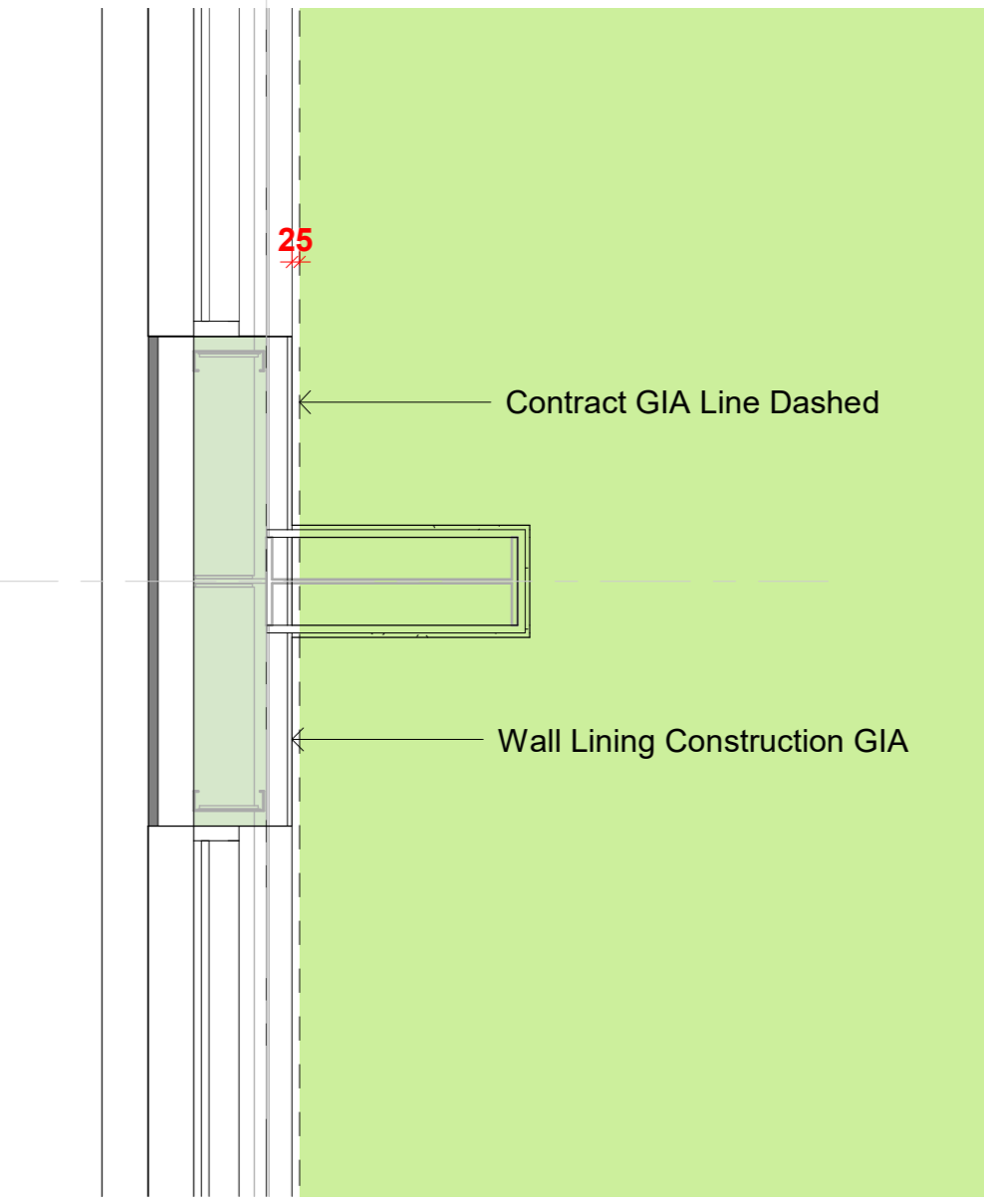
CONTRACT GIA AREAS	
WAREHOUSE UNIT -	29,980sqm / 322,702sqft
OFFICE GROUND FLOOR -	160sqm / 1,722sqft
OFFICE FIRST FLOOR -	1,465sqm / 15,769sqft
OFFICE SECOND FLOOR -	157sqm / 1,690sqft
HUB OFFICE -	215sqm / 2,315sqft
GATEHOUSE -	26sqm / 280sqft
TOTAL -	32,003sqm / 344,478 sqft



GROUND FLOOR GATE HOUSE PLAN
SCALE 1: 50



WAREHOUSE AREA - SCALE 1:20



OFFICE AREA - SCALE 1:25

CONTRACT AREAS IS SET 25mm INBOUND FROM CLADDING RAIL AND WALL LINING POSITIONS TO PROVIDE TOLERANCE.

CONSTRUCTION AREA IS ACTUAL CLADDING RAIL AND WALL LINING POSITION.

Rev	Date/Checked
C10: Note amended.	06.02.23 DM
C09: General updates and amendments.	03.02.23 DM
C08: Additional updates.	02.02.23 DM
C07: General updates.	01.02.23 DM
C06: General updates.	01.02.23 DM
C05: Additional updates.	24.01.23 DM
C04: General update.	23.01.23 DM
C03: Corrected the contract GIA areas.	20.01.23 DM
C02: Updated drawing and added in GIA dimensions and plant block areas.	20.01.23 DM
C01: Construction Issues.	19.01.23 DM

The Old Rectory Rectory Lane Milton Malvern
NORTH WALES PLP G11
t: +44 (0)1484 859916 f: +44 (0)1604 859123
www.peter-haddon.com

PLP Stone Business Park Staffordshire
Glencar CONSTRUCTION

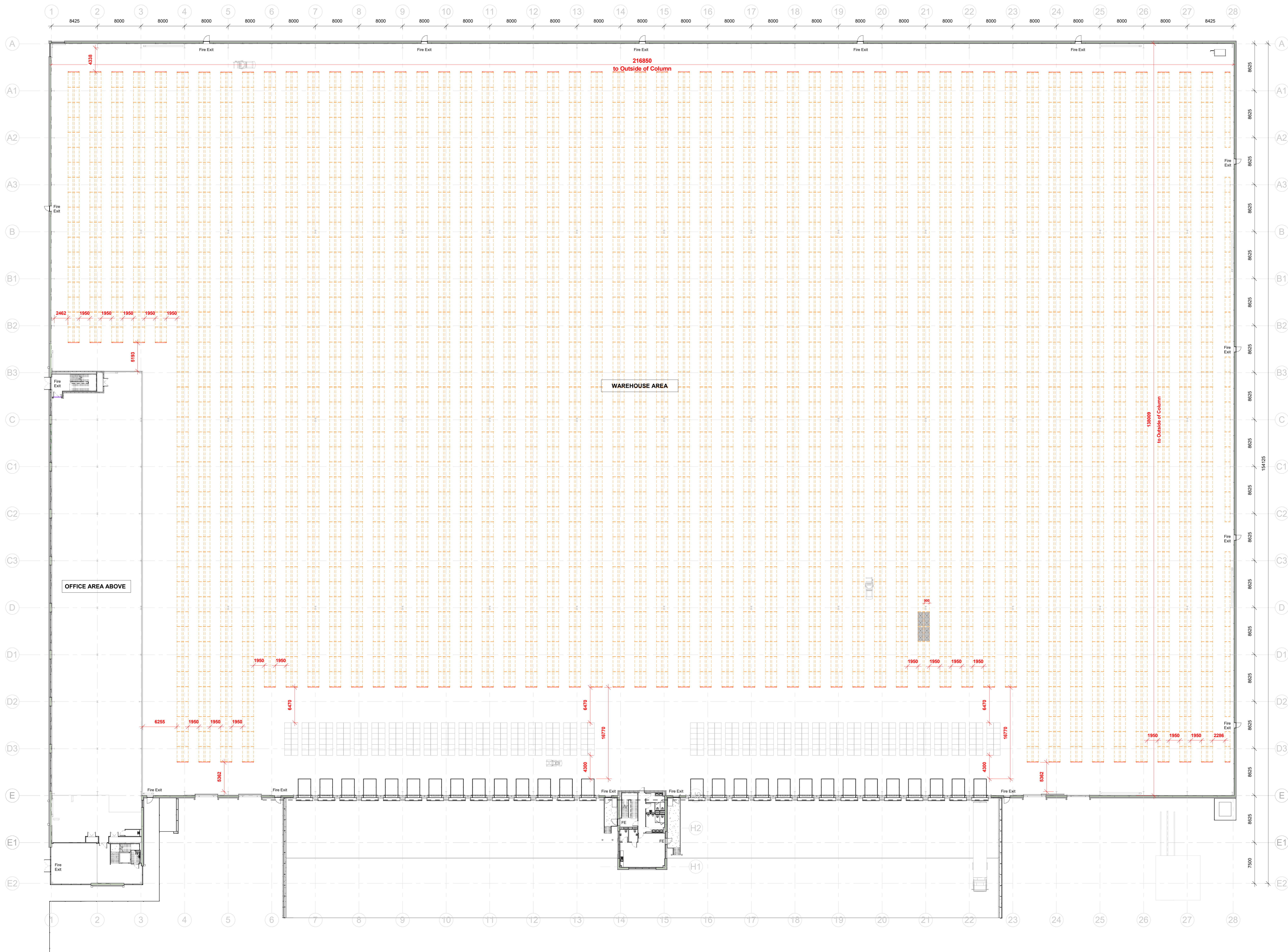
Contract & Construction Area Plan

Status: CONSTRUCTION
Drawn: DM Checked: KI
Date: JANUARY 2023

Project Number: 4540
Project Code: Originator: Zone: Lead: Rev: Type: Size: Dwg No.: Revision:

G1141- pHp-ZZ- ZZ- DR-A- 00950- C10
Scale@ A0 As indicated

Copyright reserved. Dimensions to be checked on site. Discrepancies to be reported before proceeding.



WAREHOUSE GIA AREAS

Warehouse Unit -	29,980sqm	322,702sqft
Office Ground Floor -	160sqm	1,722sqft
Office First Floor -	1,465sqm	15,789sqft
Office Second Floor -	157sqm	1,690sqft
Hub Office - (2 Storey)	215sqm	2,315sqft
Gatehouse -	26sqm	280sqft
TOTAL -	32,003sqm	344,478 sqft

GENERIC VNA RACKING LAYOUT

Haunch Height - 18m
 Pallet Size 1200 x 1000 x 1500mm high
 2 Pallets per bay - Side (1200mm) facing
 Pallet Stacking - 10 Pallets high
 (Pallets at column positions omitted)
 Reduced height pallets at valley beams (1.0m)
 First Layer Total - 8,572 Pallets

Total Pallets - 85,720 Pallets
Dock Area shown for pallet stacking : Single Layer 432 Pallets

NOTE: Total will vary with access/tunnel corridors to suit Occupier & Fire Engineer Design / Fire Strategy

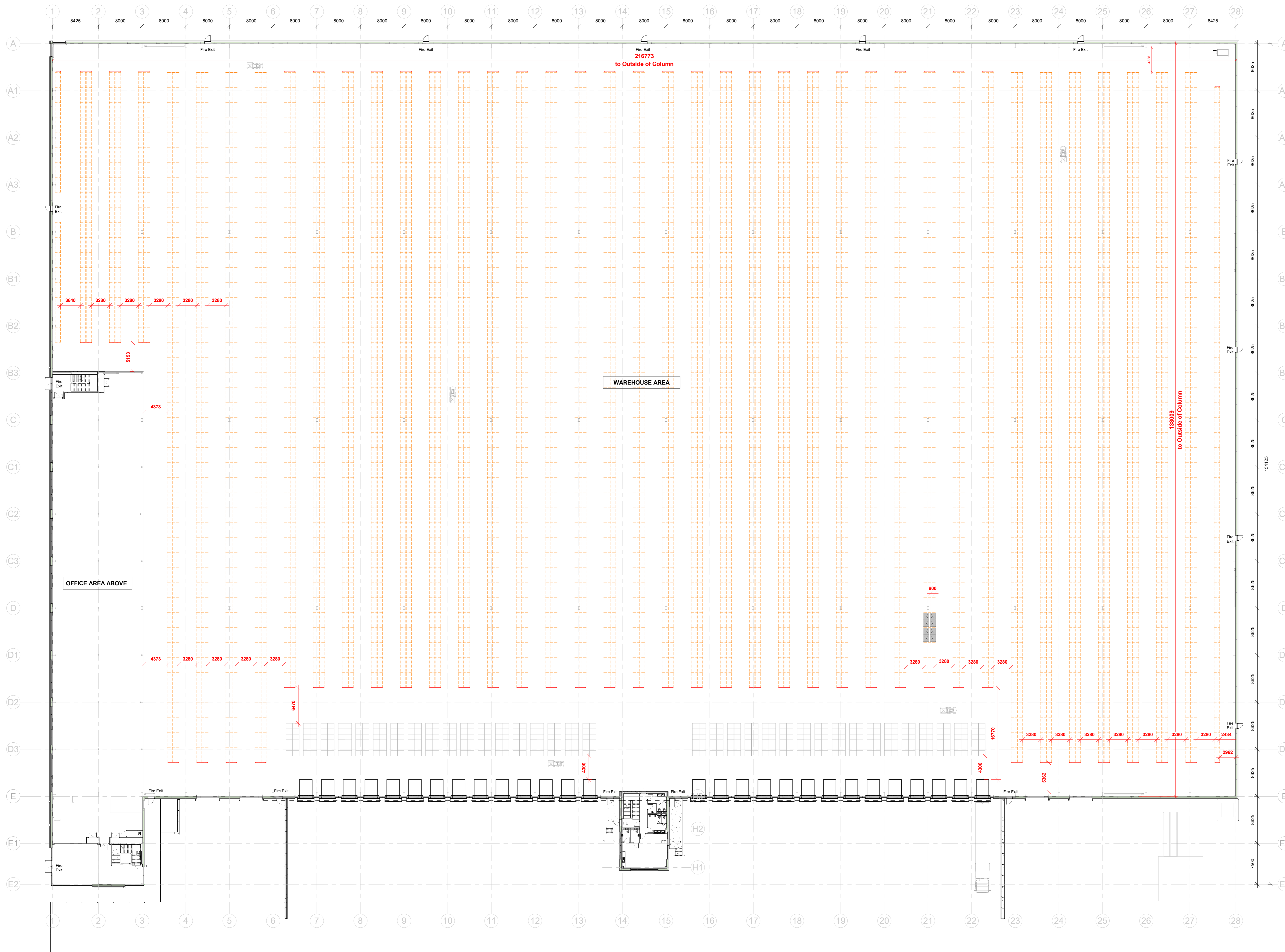
GF Floor Plan - Generic VNA
 1 : 250

C02: Additional racking added and aisle widths amended. 07.02.23 DM
 C01: Initial racking setting out layout. 05.02.23 DM
 Rev. Date/Checked
 The Old Rectory Rectory Lane Milton Abbas
 NORTHWALTON N.B.7 3AQ
 t: +44 (0)1604 859916 f: +44 (0)1604 859123
 www.peter-haddon.com

PLP
Stone Business Park
 Staffordshire

Glencar
 CONSTRUCTION
 Staffordshire

GA Floor Plan - Generic VNA Racking
 Status **CONSTRUCTION**
 Drawn DM Checked KI
 Date JANUARY 2023
 Project Number: 4540
 Project Code Originator Zone Level/Rev. Type Size Dwg No. Revision
G1141- PHPZZ- 00- DR-A- 00955- C02
 Scale@ A0 10m As indicated SCALE 1:250
 Copyright reserved. Dimensions to be checked on site.
 Discrepancies to be reported before proceeding.



WAREHOUSE GIA AREAS

Warehouse Unit -	29,980sqm	322,702sqft
Office Ground Floor -	1,603sqm	1,722sqft
Office First Floor -	1,465sqm	15,769sqft
Office Second Floor -	157sqm	1,690sqft
Hub Office - (2 Storey)	215sqm	2,315sqft
Gatehouse -	26sqm	280sqft
TOTAL -	32,003sqm	344,478 sqft

GENERIC WIDE RACKING LAYOUT

Haunch Height - 18m
 Pallet Size 1200 x 1000 x 1500mm high
 2 Pallets per bay - Side (1200mm) facing

Pallet Stacking - 10 Pallets high
 (Pallets at column positions omitted)
 Reduced height pallets at valley beams (1.0m)
 First Layer Total - 6,680 Pallets

Total Pallets - 66,800 Pallets
Dock Area shown for pallet stacking: Single Layer 420 Pallets

NOTE: Total will vary with access/tunnel corridors to suit Occupier & Fire Engineer Design / Fire Strategy

GF Floor Plan - Generic Wide Aisle
 1 : 250

C02: Additional racking added and aisle widths amended. 07.02.23 DM
 C01: Initial racking setting out layout. 03.02.23 DM

Rev. The Old Rectory Rectory Lane Milton Abbot
 NORTHAMPTON N.B.7 3A.Q
 t: +44 (0)1454 859116 f: +44 (0)1604 859123
 www.peter-haddon.com

pHp architects

PLP
 Stone Business Park
 Staffordshire

Glencar CONSTRUCTION

GA Floor Plan - Generic Wide Aisle Racking

Status **CONSTRUCTION**

Drawn DM Checked KI

Date JANUARY 2023

Project Number: 4540

Project Code Originator Zone Level No. Type Site Dwg No. Revision

G1141- PHP-ZZ- 00- DR-A- 00956- C02

Scale @ A0 1m 1 : 250

SCALE 1:250

Copyright reserved. Dimensions to be checked on site.
 Discrepancies to be reported before proceeding.